

---

DuPage Monarch Project:  
Communities Protecting Pollinators

# Annual Report

2021



*A collaboration of  
Forest Preserve District of DuPage County  
River Prairie Group of the Illinois Sierra Club  
The Conservation Foundation  
Wild Ones Greater DuPage Chapter*



## Partner Organization Representatives

**Anamari Dorgan, CPRP, Director of Community Services and Education**

Forest Preserve District DuPage County

**Connie Schmidt, Chair, Illinois Sierra Club**

River Prairie Group of the Illinois Sierra Club

**Jim Kleinwachter, Conservation@Home Program Manager**

The Conservation Foundation

**Jeanette Goodlow, Board Member**

Wild Ones Greater DuPage Chapter

## Volunteers

Lonnie Morris - Coordinator

Kim White - Educator

Bruce Blake - Garden Consultant

Karen Brittain

Jill Spealman

Margaret Nuccio



# Executive Summary



Recent experiences have left a deeper understanding of the need for nature's safe and healing places for people as well as pollinators. DuPage communities and park districts worked to overcome the challenges of a second year of disruptions and uncertainties to ensure these critical resources continue to be available and make progress on the shared vision of a county where bees, butterflies and people thrive together.

Our civic leaders are maintaining existing natural areas while expanding their conservation efforts. They are identifying new locations for habitat; an underutilized vacant lot in Darien and a tornado damaged woodland in Woodridge replanted with flowers and milkweed. Westmont offered homeowners an opportunity to share their lawns with foraging bees by suspending enforcement of the grass height ordinance until mid-May.

Awareness of the plight of pollinators spread in 2021 through art exhibits, concerts, educational programs and garden walks. West Chicago kept bees and butterflies in public view all summer with street banners featuring a monarch and hummingbird along with other things that *Take Flight*. The Forest Preserve District seeded facebook for three months with a steady stream of photographs, paintings and mixed media art showing pollinators in action.

DuPage Monarch Project's membership grew this year with the addition of five signatories: Bloomingdale Park District, Darien (Village), Hanover Park Park District, Warrenville Public Library Woodridge Park District and six new associate members: Darien Garden Club, Darien Swim and Recreation Club, Elmhurst Cool Cities Coalition, Elmhurst Garden Club, FermiLab Natural Areas and the Winfield Riverwalk Park Pollinator Garden Committee.

Two award winning projects, Naperville Park District's addition of more than seven acres of habitat and the 167 participants in Westmont's No Mow 'til Mothers Day initiative demonstrated the commitment to pollinator conservation remains strong.

This year DuPage Monarch Project became a Monarch Joint Venture partner. Through this partnership, DuPage's accomplishments will now be recognized as part of the national monarch recovery effort.

The actions benefiting eastern migrating monarchs ripple through the eco and human communities. Native plant communities help manage storm water, provide habitat for wildlife, reduce climate altering emissions from mowing, sequester carbon, save money, and offer people special places where they can connect with nature and replenish their spirits.

All this from welcoming native plants back into our parks and gardens.



# The Year in Numbers

5

## NEW SIGNATORY MEMBERS

---

*Bloomington Park District*

*Darien*

*Hanover Park Park District*

*Warrenville Public Library*

*Woodridge Park District*

1

## BIOBLITZ

---

*605 Observations*

*80 Observers*

*171 Species total*

*19 species of butterflies*

*20 species of native bees*

6

## NEW ASSOCIATE MEMBERS

---

*Darien Garden Club*

*Darien Swim and Recreation Club*

*Elmhurst Cool Cities Coalition*

*Elmhurst Garden Club*

*FermiLab Natural Areas*

*Winfield Riverwalk Park Committee*

16.1

## ACRES OF NEW HABITAT

---

65

## REGISTERED MONARCH WAYSTATIONS

---





## Outstanding Habitat and Engagement Achievements



Pollinator planting at Naperville's Riverwalk Park

The Village of Westmont and Naperville Park District were recognized in 2021 for their contributions to monarch and pollinator conservation.

Naperville Park District received the Jane Foulser Habitat Award for their strong commitment to preserving, developing and maintaining natural areas. In 2021, Naperville Park District added over seven acres of high-quality pollinator habitat, distributed across six locations. The new areas are part of a long-range strategic plan extending through 2039 for converting turf to habitat, improving existing natural areas and stabilizing shorelines with plantings of native species. The Naperville Park District's vision includes sharing the land with the creatures needed for all of us to thrive.

The Village of Westmont received the Pat Miller Community Engagement Award for No Mow 'til Mother's Day, an initiative that encouraged homeowners to turn their lawn into temporary habitat at a time it is most needed by native bees. There are many ways of creating habitat in a yard but few easier than simply not mowing the grass. Participants agreed to delay mowing of all or certain sections of their lawn until Mother's Day, giving flowers like clover and other spring bloomers time to blossom. The flowers provided nectar and pollen needed by bumblebee queens who were building nests for their young.

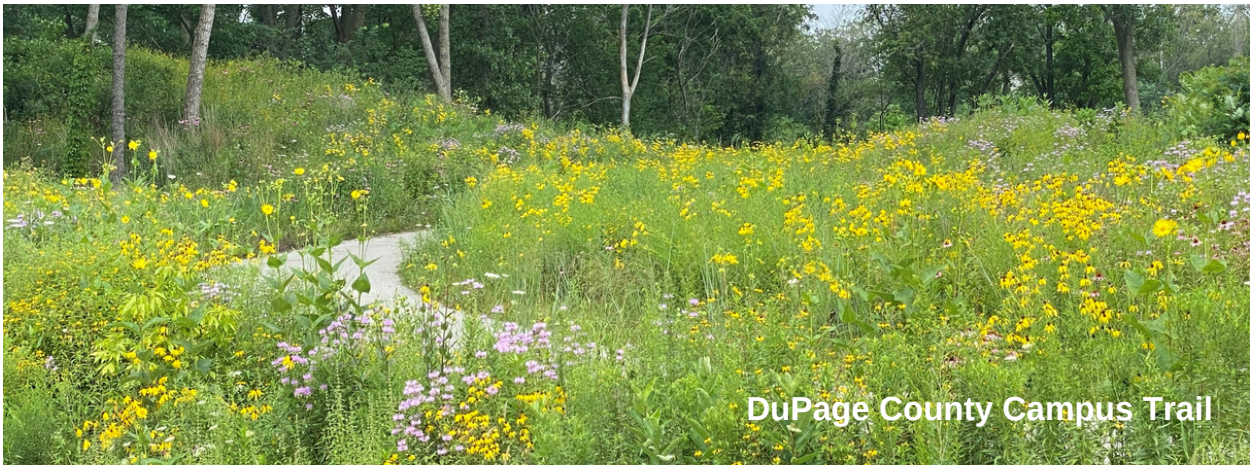
Over 160 homeowners participated in No Mow til Mother's Day without a single complaint received by the Village.



### Westmont's Award Presentation

Left to right: Connie Schmidt, DuPage Monarch Project; Lonnie Morris, DuPage Monarch Project; Trustee Bruce Barker; Pat Miller, Conservation Specialist, Monarch Watch; Jon Yeater, Public Works; Mayor Ron Gunter

# Habitat for Monarch Recovery



New pollinator habitat was added to gardens, parks, churches, corner lots and the county campus. Turf was converted to native plant communities with stormwater basins a typical site for these projects. Pond and river shorelines were stabilized with long rooted native shrubs and flowers, a wooded area destroyed by the 2021 tornado was seeded with a mix of grasses and forbs and rain gardens popped up in parking lots and along sidewalks.

This was a good year for monarch waystations, with 65 new stations registered with Monarch Watch. Collectively, the waystations added slightly more than an acre of habitat.

7.1 acres	Naperville Park District	various locations
3.5 acres	Darien	corner of 74th and Elm
3 acres	Woodridge Park District	Ides Grove Park
2 acres	Bloomington Park District	Westlake Park
.5 acre	DuPage County	Campus
<b>Total = 16.1 acres</b>		
5,000 sq ft	Winfield Riverwalk Park Committee	Riverwalk Park, Winfield
4,800 sq ft	Immigrant Solidarity/ DuPage Monarch Project	St. Andrew Lutheran Church, West Chicago
3,000 sq ft	Woodridge Park District.	83rd St Park bioswale
<b>Total = 12,800 sq ft</b>		



## Community Engagement and Education

"People have to love the Earth before they save it...So love is the key."

Bill Jacobs, Co-founder St. Kateri Habitats

Knowing, caring and acting are the solution to monarch decline. Every conversation, program, class, interpretative sign, pollinator garden walk and art exhibit about butterflies ignites interest and brings people closer to championing the survival of monarchs.

Park districts, villages, cities, volunteer groups, garden clubs and educators provided many creative, fun opportunities this year for learning about the challenges facing bees and butterflies.



**Top: l to r** No Mow 'til Mother's Day, Westmont; Luanne Spiros, Darien Park District Commissioner, Cathy Streett, Darien Garden Club at an Oaktober event; Kirk Kerndl's entry to FPDDC Pollinators in Action: Flowering Journeys, FPDDC art exhibit

**Bottom: l to r** Art Bee Exhibit, West Chicago Garden Club, Kruse House, West Chicago; Kim White, DuPage Monarch Project Educator; Start in Your Yard (2021-2022), Elmhurst Cool Cities Coalition

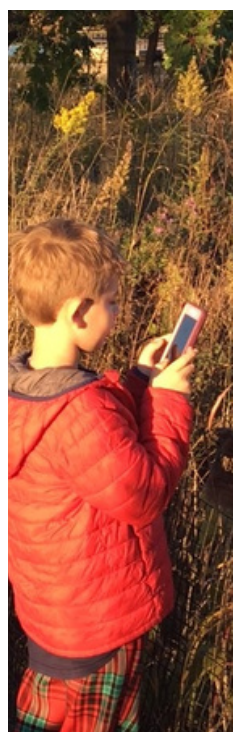
---



## Nature Fun for Kids

Many parents are concerned about the amount of time kids spend engaged with technology and are looking to shift the balance from screen-time to outdoor activities. Seek, the iNaturalist app designed for kids, is a solution that will please both kids and parents. Seek is an easy to use smartphone app for learning about plants and wildlife. It uses live image recognition to identify plants and animals. Once Seek has identified the plant or animal's species, it prompts the user to take a photo, unlocking further features of the app.

Users can earn badges and participate in challenges such as the Seasonality Challenge to find 10 new species.



James Sullivan using Seek with  
Linda Sullivan

While exploring and learning about the natural world with Seek, observations can be uploaded to iNaturalist, a globally sourced database of biodiversity observations. These observations are used for many different purposes, including community science projects.

Projects can be as easy as creating an inventory of birds or butterflies or pollinators observed in a park or comparing changes in biodiversity after converting turf to habitat.

DuPage Monarch Projects 2021 BioBlitz used iNaturalist for identifying species and collecting data.

The Seek App takes many special precautions to protect User privacy to ensure safe use by persons 12 years of age or younger. The App does not require a user account or other log in: latitude and longitude coordinates transmitted by the App to identify species near the User are rounded to two decimal places before transmission in order to protect the precise location of the User.

A teachers guide is available for introducing Seek to students in summer camps, classes and workshops.

---

## Signatory Actions

### Aurora

2014 - Fox River planting on west shoreline from WCC to north of Hollywood Casino, ongoing with annual maintenance

\*\* Fox River east shoreline 500 linear feet north of New York St, partially funded by ComEd/Open Lands grant

\*\* Pollinator habitat in three raised beds on Water St Mall, Millennium Park, downtown rain gardens, Phillips Park Zoo, Phillips Park Golf Course

\*\* Pollinator information page on City's [website](#)



### Bloomington Park District

2009 - several acres at Lakeview Park restored as a natural area

2013 - Restoration of natural areas at Sunnyside Park

2014 - Inventory and prescriptive management plans developed for natural areas

2014 - Pizzo & Associates managing Springfield Parks Wetland with a prescribed burn and establishing native species

2018 - Renovation of Circle Park included a nature themed playground, a rain garden and a nature trail

2020 - two acres of manage wetlands added in Circle and Westlake Parks

2021 - Signed DMP resolution

2021 - Two acre turf to meadow conversion began at Westlake Park

### Carol Stream

2016 - Monarch butterfly painting by Jan Smith was selected as the graphic for the annual vehicle sticker

2016 - The Village received a \$10,000 grant through the ComEd Open Lands program (along with donations from Baxter & Woodman, CH2M, and Bedrock Earthscapes) and developed a native prairie at the Water Reclamation Center (WRC).

2019 - Four residential lots (30,000 sq. ft) purchased for flood control were seeded by Bedrock Earthscapes. There is a maintenance agreement with Bedrock for these areas.

### **Darien (City)**

2021 - Signed DMP Resolution and NWF Mayors for Monarchs Pledge

2021 - Converting 3.5 acres of turf to meadow at the corner of 74th and Elm.

### **Darien Park District**

2019 - Converted .08 acres of Chestnut Park to habitat with funding from the Gift of Carl

2020 - sign DMP resolution

2020 - Chestnut Park registered as a monarch waystation

2020 - Habitat added to Birchwood Pond, South Grove Playground and Darien Community Center

2021 - habitat planting at Holly Park

2021 - [Going Green](#) page added to website



Bee  
Birchwood Park  
Darien Park District

### **Downers Grove (Village)**

2018 - A pollinator garden is coming to the open areas near the Belmont underpass. The grass inside the turnarounds at Warren Avenue and Belmont Road is being replaced with sustainable native plants to attract and provide a habitat for pollinators. The garden will also include milkweed to target Monarch butterflies, building on efforts by surrounding suburbs to develop a “Monarch corridor” along the BNSF railroad

2019 - Interpretative signage added to the Belmont Station Pollinator Project

2019 - Pierce Downer Heritage Alliance volunteers and city staff added forbs to the Belmont Station Pollinator Project

### **DuPage County**

2013 - Present - DuPage County has added or renovated 25 acres of native plant habitat on its Wheaton campus. Four species of milkweed are maintained on campus as well as a diverse suite of plants that support pollinators throughout the growing season.

2018 - The county became a Level I Arboretum, certified by ArbNet. All new trees, shrubs, and plants are native, further supporting our native insects and wildlife and setting an example for over 1 million annual visitors.

2018 - 2021 - Over 400 mostly native species of shrubs and trees have been planted on the County Campus

2021 - 1/2 acre of turf at the County Campus is undergoing transition to a meadow

---



### **Elmhurst (City)**

2008 - 2018 - Five public schools registered waystations

2015 - Elmhurst College registered a waystation

2017 - Elmhurst Garden Club proclaimed 2017 The Year of the Monarch

2017 - Children's Monarch Fest as part of the Elmhurst Garden Walk and Faire

2019 - Commitment to pilot program at the Armitage tower site for organic lawn care in 2020

2019 - Fischer School is partnering with ComEd and Mighty acorns to restore a ComEd ROW to native habitat

### **Elmhurst Park District**

2007 - 2016 Registered four waystations located at 4 park sites

2015 - 2017 Local Eagle Scouts installed more than 30 nesting boxes for native bees throughout the District.

2017 - Co-sponsor of Children's Monarch Festival held at Elmhurst Garden Walk & Faire

2017 - Planted twelve flats of milkweed provided by the Elmhurst Garden Club in four Park District parks which contain Monarch Waystations

### **Fox Valley Park District**

2016 - Member of The Fox Valley Monarch Corridor Project, a 12 member collaboration. Over the next two years, forest preserve districts, park districts, township open space districts and private conservation

organizations will be enhancing nearly 1,000 acres of land in the Fox Valley by growing milkweed seed, distributing seeds and plants and putting plants in the ground.

2019 - Work began on 17.4 acres of habitat at the Stuart Sports Complex, funded in part by ComEd Clean Energy grant

2020 - Recipient of the Jane Foulser Habitat Award

2020 - Work continues on Stuart Sports Complex habitat project with funding from Illinois Clean Energy Foundation

2020 - Funding received from Illinois Clean Energy Foundation for Pollinator Educational Habitat at Lippold Park adjacent to the District's Red Oak Nature Center

2021 - Lippold Park was seeded in March, In October, native forbs, grasses and shrubs were planted

2021 - Lippold Park's Pollinator Educational Habitat reached 600 pre-teen youth through summer camps, girl scouts and a Student Scientist program for 5th grade students.



## **Glen Ellyn Park District**

2015 - Partnered with School District 41, GE Public Library, Forest Preserve District of DuPage County and the Village of Glen Ellyn to offer monarch educational outreach, put up banners, provided milkweed seeds, and installed two butterfly gardens, one at Maryknoll Park and one near parking lot of Crescent and Glenwood Avenue. Participants who installed the gardens received milkweed plants (total of 760 given away).

2016 - Village of Glen Ellyn's Environmental Commission and Park District offered "We Support Pollinator" signs as part of an awareness campaign.

2016 - Village of Glen Ellyn's Environmental Commission and Park District offered "We Support Pollinator" signs as part of an awareness campaign.

2016 - In collaboration with the Village of Glen Ellyn, added milkweed and nectar plants to a planting between a parking lot and Crescent Ave

2016 - Turf conversion project began at Maryknoll Park. Two and a half acres were planted to a low-stature prairie that will offer habitat. Project is on-going.

2017 - 2018 - In collaboration with the Village of Glen Ellyn hosted two Sustainable Yard Tours

2018 - Native tree and shrub sale co-offered by The Conservation Foundation and Village's Environmental Commission

2018 - Registered waystations at two parks, Churchill and Maryknoll

2018 - Milkweed plants and nectar sources added to natural areas and park gardens

2018 - Continuing to offer monarch education programs at schools and camps

2019 - Summer nature camp program incorporates monarch education. Some sessions planted milkweed and flowers

2019 - Naturalist visits to park district preschool programs included pollinator education

2019 - Annual collection and dispersal of milkweed seeds in park natural areas

2019 - Sustainable Yard Tours and a Native Tree and Shrub sale - both with components that support pollinator and monarch efforts.

2020 - With funding from ComEd's Greenest Region Program, expanded the butterfly garden, purchased plant labels, installed interpretative signage featuring QR codes for additional info supporting pollinators and expanded the pollinator meadow at Maryknoll Park.

2020 - In conjunction with The Conservation Foundation and Glen Ellyn Environmental Commission held the annual native shrub and tree sale in Sept.



Maryknoll Park  
Glen Ellyn

### **Glendale Heights (Village)**

2017 - Added monarch/pollinator plants to an ornamental bed at the Historic House

2018 - Planted a Monarch Waystation at Mill Pond Park.

2018 - Glenside Library and Immigrant Solidarity Dupage planted Monarch Waystation at the library

2019 - Hosted a showing of The Guardians.

2019 - Plants added to the Glenside Library monarch garden

### **Hanover Park Park District**

2020 - Registered Community Center planting as a waystation

2021 - Signed DMP resolution

2021 - Planted and registered 3,000 sq ft waystation

### **Lisle Park District**

2011 – Hired its first Naturalist and began expanding natural areas and no-mow zones. Began concerted effort to expand the use of native plants and seed mixes in park restoration projects.

2014 – Installed six honey bee hives in Community Park that are managed by a professional beekeeper. Honey harvested is available for public purchase at the Lisle Park District Recreation Center and various special events.

2019 – Conservation Foundation certified Abbeywood Park and native flower beds at the Recreation Center as environmentally friendly.

2019 – Installed four additional honey bee hives in River Road Park

2019 – District initiated a Pesticide Free Pilot Program at four of its parks. Hosted kick-off event at Leask Lane Park on June 2nd.

Received community donations from Stonyfield Organic Yogurt and Jewel-Osco totaling \$10,000 to advance the District's efforts. Hosted press event at Connelly Memorial Park on August 17 attended and supported by Illinois State Representative Terra Costa Howard, State Senator Suzy Glowiak Hilton and US Representative Sean Casten.

2019 – Board of Park Commissioners adopted a Resolution "Authorizing the Director of Parks & Recreation to enhance and expand available habitat for Monarch Butterflies and other Native Pollinators."

2019 – With Midwest Grows Green, Stonyfield Organic Yogurt and Osborne Organics, hosted a free Organic Parks Workshop on October 24th to promote the use of organic park maintenance and the importance of soil biology, cultural practices and other natural lawn care concepts.



Locally harvested acorns

---



### **Lisle Park District (cont'd)**

2021 - Continued to remove invasive species: honeysuckle, buckthorn, mulberry, pear, garlic mustard, teasel, purple loosestrife, crown vetch, birds foot trefoil, and reed canary grass

2021 - seeded previously mulched tree rings in 10 parks with native plants consisting of 12 different species, two of which were different milkweed species

2021 - grew over 250 grasses, sedges and forbs for planting in natural areas and traditional landscapes

2021 - collected acorns and are preparing to grow 500 seedlings

### **Lisle Park District (cont'd)**

2021 - preparing to grow about 750 native perennials, consisting of 15 different species, three of which are different milkweed species, to plant in 2022.

### **Lombard (Village)**

2020 - Signed DMP Resolution

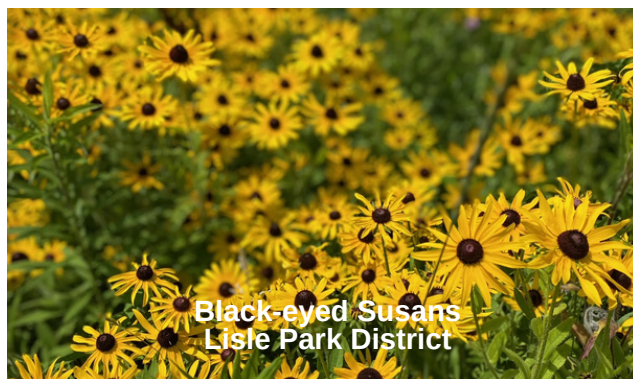
2021 - Bedrock Earthscape provided maintenance for 10 habitat plantings: Pond perimeters at Terrace View Pond, Morris Pond, Village Complex Pond Dry Pond Bottoms at Grace & Central, Echo Pond, Parker & Kaplan, Surges Existing Natural Areas - Parking lots at Public Works, Hammerschmidt Commuter, 20 E St Charles Rd Commuter



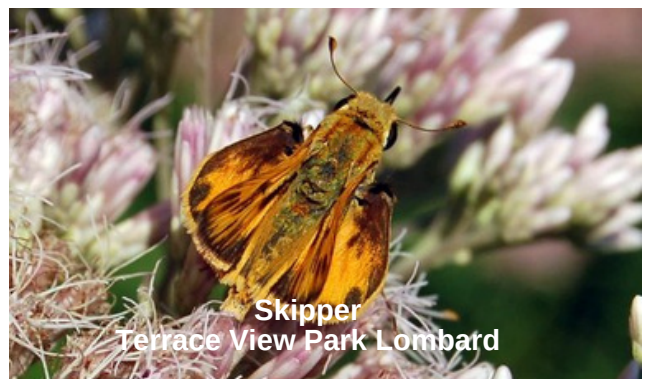
Purple Prairie Clover  
Lisle Park District



Commuter lot pollinator planting  
Lombard



Black-eyed Susans  
Lisle Park District



Skipper  
Terrace View Park Lombard

---

### **Naperville Park District**

2016 - Raised and released 35 monarchs butterflies as an ongoing educational display at Knoch Knolls Nature Center

2016 - Passed a Monarch Resolution

2017 - Designated a Monarch Waystation at Knoch Knolls Park

2017 - Raised, tagged and released 40 monarch butterflies as an ongoing educational display at Knoch Knolls Nature Center

2017 - Hosted Monarch Festival at Knoch Knolls Park/Nature Center

2018 - Added habitat at Knoch Knolls Park

2018 - Designated a Monarch Waystation at Ron Ory Community Garden Plots Idea Garden

2018 - Added habitat along parking lot at Ron Ory Community Gardens

2020 - Recipient Pat Miller Community Engagement Award

2020 - Shoreline Restorations at Clow Creek Greenway and 95th Street Community Plaza Pond added 1.8 acres of habitat

2020 - 1.79 acres of habitat added to Pollinator Meadows in Stanford Meadows Park and Will-O-Way Commons Park

2020 - Wolf's Crossing Community Park is underdevelopment and will include 5.33 acres of pollinator habitat

2020 - NPD uses Integrated Pest Management and has discontinued

neonicotinoid based pesticides for grub control, replacing them with beneficial nematodes and a specific bacteria. Some athletic fields are not watered for a week in July to inhibit egg laying.

2020 - Springbrook and Naperbrook Gold courses maintain areas of pollinator plants, allow milkweed to spread naturally and do not use insecticides

2021 - Rec'd the Jane Foulser Habitat Award

2021 - Habitat added: Clow Creek Shoreline Restoration (2 acres), Springbrook Parkway Park Meadow (1.1 acres), Arrowhead Park Meadow (.85 acres), Redfield Commons Park Meadow (.21 acres), Brook Crossings Pond (.6 acres) Frontier Sports Complex (new berm, 2.4 acres)

2021 - Three spring wildflower walks

### **Oak Brook Park District**

2019 - Signed monarch resolution

2019 - Dean Nature Sanctuary is developing an apiary for pollinator health

2019 - Ginger Creek restoration will include milkweed and native plants

2021 - collected pounds of seed for use in establishing a new natural area in 2022

2021 - installed three rain gardens



### **Villa Park**

2017 - In collaboration with the Villa Park Economic Commission, Environmental Commission, Kenilworth Watch Group, Community Pride Commission, Villa Park Garden Club, The Conservation Foundation and DuPage Monarch Project planted five butterfly gardens along the Great Western Trail.

### **Warrenville (City)**

2016 - Pollinator and native plant resource page on City's website

2016 - Pollinator garden planted by Homeowners Association at Warrenville Lakes

2017 - Article published in the *Resource Newsletter* on Monarch butterflies

2019 - Warrenville in Bloom planted a pollinator garden at Warrenville Public Library

2019 - Pollinator Garden planted by Maple Hill Homeowners Association

### **Warrenville Park District**

2019 - Hosted a viewing of *The Guardians*, a documentary about the challenges facing the monarchs overwintering refuges in Mexico

### **Warrenville Public Library**

2021 - Signed a DMP Resolution

2021 - Display celebrating the resolution included books for all ages about monarch butterflies and how to plant monarch-friendly habitat

2021 - Program by FPDDC with tips for attracting pollinators (50 attendees)

2021 - A STEAM Team Challenge featured a take home kit that included supplies to make a butterfly feeder plus

### **Warrenville Public Library cont'd**

a planter, soil and wildflower seeds

2021 - Maintained pollinator landscaping

2021 - Distributed milkweed seed to visitors

### **West Chicago (City)**

2017 - Demonstration garden planted at City Hall

2018 - Conducting an inventory of appropriate sites for additional waystations

2019 - Declared 2019 as The Year of the Butterfly

2019 - West Chicago Garden Club included milkweed at the Blooming Fest Plant Sale

2019 - The Butterfly Effect, a public art project, installed 36 artist painted butterflies in public spaces throughout the community

2019 - Gallery 200, West Chicago High School and master naturalist Judi Horsley hosted viewings of *The Guardians*, a documentary about the challenges facing the monarch's overwintering territory in Mexico

2019 - The annual Christmas tree is decorated with butterflies.

2019 - West Chicago is recognized by DuPage Monarch Project for outstanding monarch community engagement and conservation initiatives

2020 - Pollinator garden planted at Don Earley Park. It will serve as a laboratory for citizen science involvement.

2020 - Planted a butterfly shaped native plant garden at Reed-Keppler Park

2021 - Renewed commitment to NWF Mayors for Monarchs

2021 - [Pollinator Program](#) page added to City's website

2021 - Art Bee display at Kruse House Gardens

---



### **Westmont (Village)**

2017 - ongoing: The Villages of Clarendon Hills and Westmont are working together to design and develop the Richmond Education Gardens and Apiary. This new facility will be located on the unused 0.15 acre Village public road right of way, between the Village of Clarendon Hills Public Works facility and the Downers Grove Township Highway Garage, south of the Burlington Northern Santa Fe (BNSF) Railroad. This right-of-way is owned by both the Village of Clarendon Hills and the Village of Westmont. Once completed, the Gardens will provide a new place in our communities to promote education programs about natural and organic gardening methods and our environment.

2018 - Registered a monarch waystation located in downtown Westmont

2020 - Seeded 4.28 acres of a detention area in the Ashford subdivision with site appropriate native species

2020 - Continued work on the Richmond Education Gardens and Apiary (REGA) project. Added a short grass prairie planting and shrubs and trees.

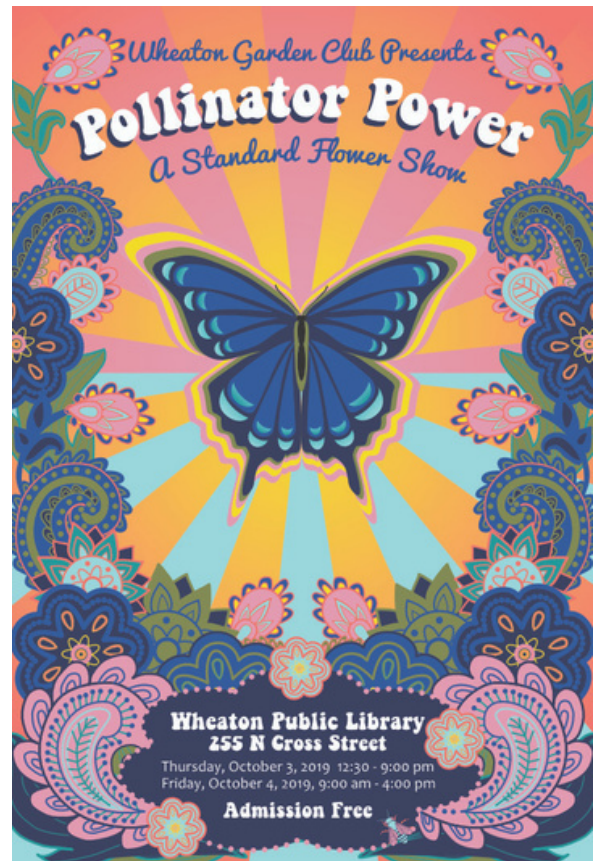
2021 - *NO MOW til MOTHERS DAY.*

2021 - Rec'd Pat Miller Community Engagement Award for No Mow til Mothers Day

2021 - Continue development of Richmond Educational Garden

### **Wheaton (City)**

2019 - The City of Wheaton, Wheaton Environmental Improvement Commission and Wheaton Park District are planning for the 20th anniversary of the Native Plant Sale in 2020



### **Wheaton Park District**

2016 - Registered five monarch waystations

2018 - Registered one waystation

2019 - Worked with SCARCE to reduce the amount of chemicals put on surfaces as well as to dramatically increase the number of native plants in the parks

2019 - Held 19th Annual Native Plant Sale

2021 - provided weeding and watering for pollinator planting at Seven Gables Park

2021 - Added pollinator plants to landscaping at Central Athletic Complex, Community Center parking lot, Rice pool landscape and Northside pool

### Woodridge Park District

2018 - Native seed installed around Lake Carleton and buffer significantly expanded

2018 - Native seed mix installed along streambanks in 63rd St and Summerhill Parks

2019 - Triangle Park, turf field replaced with a stormwater basin planted with native species

2019 - Hawthorne Hill Woods open turf area converted to native plantings, approximately 0.75 acre

2020 - Ides Grove West Pond buffer expanded using native seed mix

2021 - Ides Grove West tornado damaged area, which was formerly wooded, installed prairie seed mix, approximately 3 acres

2021 - At 83rd St Park, approximately 3000 sq ft. bioswale installed, working with Rotary in 2022 to install a pollinator garden in a 20'x20' section

2021 - Signed DMP resolution



Tornado damage Woodridge Park District  
June 20, 2021

### Associate Members

Associate Members are organizations such as garden clubs, schools, churches and businesses actively involved with monarch conservation by planting milkweed and nectar plants, reducing or eliminating the use of pesticides, collecting seeds, sharing or selling native plants, engaged in educational outreach about monarchs and pollinators through signage, programs, blogs, facebook or guided walks.

### Community Presbyterian Church of Clarendon Hills

2019 - planted 50 milkweed plants

2020 - planted 50 milkweed plants

2021 - plan to add 150 milkweed plants



Darien Milkweed Patch



### Darien Garden Club

2021 - **Habitat Projects:** Maintains St John Pollinator Garden, Darien Milkweed Patch, habitat at Aspired Living of Westmont

2021 - **Seed:** collected seed and distributed locally, to IDOT and IL Tollway and businesses planting along the Route 66 Flyway

2021 - **Engagement:** Newsletter articles, attended IMP summits, recruited local businesses to plant habitat along the Route 66 Flyway, hosted zoom program on City Nature Challenge, provided nature education at senior center, Pollinator Week Celebration with Kim White, DMP Educator, Oaktober Celebration at the IPPL Monarch Waystation, 20th Anniversary Garden Walk included pollinator and native plant gardens, National Night Out hosted caterpillar/butterfly matching activity, displayed monarch caterpillars and distributed pollinator magnets.

Darien Garden Club has received numerous awards from Garden Clubs of Illinois and Central Region National Garden Club for their environmental and conservation projects.

### Darien Swim and Recreation Club

2021 - Maintains a large patch of milkweed at the Club

### Elmhurst Cool Cities Coalition

2016 - Lobbied City of Elmhurst Mayor to sign the Mayor's Monarch Pledge

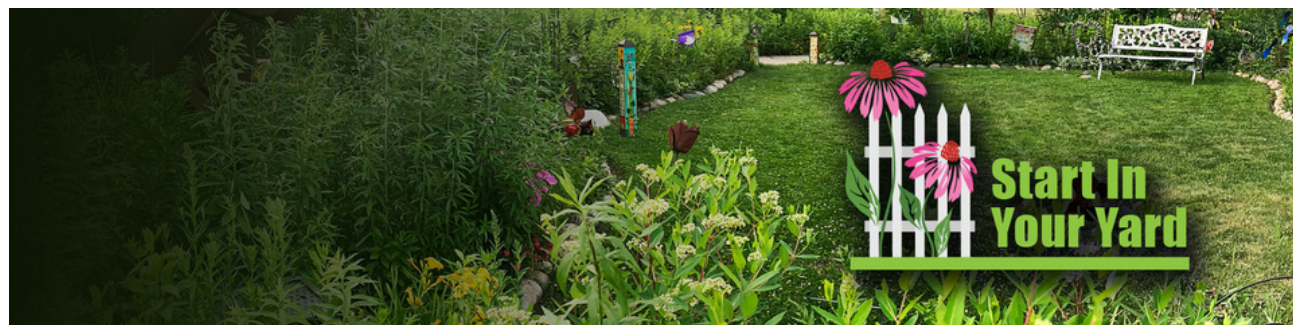
2016 - present Stay on the Grass and Pesticide Free Parks campaign

2017 - Co-sponsored Children's Monarch Festival with Elmhurst Garden Club

2017 - Designed display for Elmhurst Public Library

2017 - Hosted *Plight of the Monarchs* educational program with Pat Miller

2021 - *Start In Your Yard* community outreach campaign: Doug Tallamy's Bringing Nature Home book for the One Book, One Community Read; hosted Elmhurst's first Native Garden Tour; hosted Bringing Nature Into Your Yard program with Jim Kleinwachter from The Conservation Foundation; Planning for and sponsorship of a new native garden installation at Wilder Park; hosted a Bringing Nature Home book discussion





### Elmhurst Garden Club

2005 - Program about monarch decline and planting monarch waystations

2005 - Five residential waystations planted

2006 - Collaborated with the Elmhurst Park District on planning a monarch waystation in the Eldridge Park natural area

2006 - Members continued to plant residential waystations

2006 - Jane Foulser the club's Conservation and Education chair made presentation about Monarch Watch and Waystations to: Wild Ones, DuPage Organic Gardening Club, Sierra Club River Prairie Group, Meadows Retirement Center Glen Ellyn



Pat Miller (l) and Jane Foulser (r)  
Elmhurst Garden Club members who  
registered the first monarch  
waystations in DuPage county

2007 - Provided funding, labor and expertise for the Eldridge Park Waystation

2007 - Press release about monarch decline and waystations sent to Chicago Tribune. Club rec'd 17 calls from readers. Eight new waystations created as a result of press release

2007 - Club bought 20 mini-tagging kits and distributed to members

2008 - Designed a display on monarchs for the Elmhurst Public Library

2008 - Jane Foulser and Pat Miller made presentations throughout the county, reaching 1,325 adults and children

2016 - Member field trip to certified waystations in Elmhurst

2016 - Program, *Monarch Butterflies: Migration from Chicago to Mexico* by Diane Hunter

2016 - New residential waystation established and certified

2017 - Club named 2017 Year of the Monarch

2017 - Display case made for Elmhurst Public Library

2017 - EGC and Elmhurst Cool Cities Coalition sponsored Children's Monarch Festival during the annual garden walk

2017 - Garden Walk ticket booklet included four pages of information about monarchs and waystations

2017 - Two waystations planted and certified at Park Place.

2017- Provided Elmhurst Park District 8,300 seeds of *Asclepias syriaca* and *tuberosa* for Butterfield Park

2017 - Monarch waystation established at York High School

2018 - Purchased several educational butterfly tents for Park Place

---

### Elmhurst Garden Club cont'd

2019 - Educational butterfly tents donated to Park Place

2020 - Educational butterfly tents donated to Park Place

2021 - EGC gave a native plant to members who wanted one and made remaining available for purchase

2021 - Educational butterfly tents donated to Park Place

2021 - Partnered with Elmhurst Cool Cities Coalition on Start in Your Yard  
*Elmhurst Garden Club has received several awards from Garden Clubs of Illinois and National Garden Club for their environmental and conservation projects*

### Fermilab Natural Areas - Volunteer

Fermi National Accelerator Laboratory is owned and managed by the US Department of Energy and is engaged in elementary particle research. It is located in Kane and DuPage counties on a 6,800 acre site made up of grasslands, wetlands and woodlands. The land is managed to improve flora diversity, protect native species from invasive ones and for the benefit of local wildlife.

2020 - Closed to all but essential staff, FNA volunteers inactive

2020 - Monitoring, mapping and treating populations of 27 invasive species

2020 - seed collected from 139 species

2021 - Closed to all but essential staff, FNA inactive



FermiLab Natural Areas  
Volunteers



## **Wheaton Garden Club**

2017 - formed a Monarch Committee, established a goal of 10 members planting a waystation

2017 - Lobbied for City of Wheaton to sign a Monarch Resolution which was signed on May 16 2017

2017 - hosted an educational display on monarchs at the Wheaton Public Library

2018 - In June provided a print copy of the *Bee a Monarch Champion* poster to the Wheaton Public Library

2018 - In Sept., created a monarch display at the Wheaton Public Library

2019 - theme for the annual flower show was Pollinator Power

2020 - Received a second place Planting for Pollinators Award from the Garden Clubs of Illinois

2020 - 5 waystations registered with Monarch Watch

2020 - milkweed planted in five member gardens

2020 - Received permission from Wheaton Park District to plant a pollinator garden at Seven Gables Park

2021 - Planted, certified as a waystation and maintained new pollinator garden at Seven Gables Park

2021 - Five members participated in Monarch Watch's Calendar Project and tracked number of monarchs seen in their gardens during designated time periods

2021 - Seven member gardens certified as monarch waystations



Wheaton Garden Club Members  
Seven Gables Park

## **Winfield Riverwalk Park Committee**

2021 - Planted a 5,000 sq ft area of Riverwalk Park with 6,000 plants.



Volunteers planting at Winfield Riverwalk Park

---



## Photo Credits

Cover	Monarch Food Fest	Steve Ornberg
p. 3	FermiLab Prairie	Courtesy of FermiLab Natural Areas
p. 4	White Asters	Courtesy of City of Aurora
p. 5	River Walk Park, Naperville PD	Courtesy of Naperville Park District
	Westmont Award Presentation	Courtesy of Westmont
p. 6	DuPage County Campus Trail	Courtesy of DuPage County
p. 7	No Mow 'til Mother's Day	Courtesy of Westmont
	Luanne Spiros & Cathy Streett, Darien PD	DuPage Monarch Project
	Bees to Flower	Kirk Kerndl
	Art Bee	Courtesy of West Chicago
	Kim White	DuPage Monarch Project
	Start in Your Yard	Courtesy of Elmhurst Cool Cities Coalition
p. 8	James Sullivan "Seeking"	Linda Sullivan
	Goldenrod	Linda Sullivan
	James and Linda Sullivan "Seeking"	Linda Sullivan
p. 9	Aurora Pollinator Garden	Courtesy of Aurora
	Pollinator habitat Fox River	Courtesy of Aurora
p. 10	Bee Birchwood Park Darien Park District	DuPage Monarch Project
p. 11	FermiLab Prairie	Courtesy of FermiLab Natural Areas
p. 12	Planting, Maryknoll Park	Courtesy of Glen Ellyn Park District
p. 13	Acorns	Courtesy of Lisle Park District
p. 14	Purple prairie clover, Lisle PD	Ryan Jensen
	Commuter lot planting, Lombard	Linda Sullivan
	Black-eyed Susans, Lisle PD	Ryan Jensen
	Skipper, Lombard	DuPage Monarch Project
p. 15	Rain garden, Oak Brook PD	Courtesy of Oak Brook Park District
p. 17	Pollinator Power poster	Courtesy of Wheaton Garden Club
p. 18	Tornado damage	Courtesy of Woodridge Park District
	Milkweed, Darien	Courtesy of Darien Garden Club
p. 19	Start in Your Yard	Courtesy of Elmhurst Cool Cities Coalition
p. 20	Pat Miller & Jane Foulser	Jane Foulser
p. 21	Pollinator Week 2018 poster	DuPage Monarch Project
	FermiLab Natural Areas volunteers	Courtesy of FermiLab Natural Areas
p. 22	Wheaton Garden Club members	Courtesy of Wheaton Garden Club
	Winfield Riverwalk Park volunteers	Eric Spande

---